

SQuAP-Ont: an Ontology of Software Quality Relational Factors from Financial Systems

Paolo Ciancarini^{a,b}, Andrea Giovanni Nuzzolese^a, Valentina Presutti^a, and Daniel Russo^{a,b,*}

^a *STLab-ISTC, Consiglio Nazionale delle Ricerche, Rome, Italy*

^b *Department of Computer Science and Engineering, University of Bologna, Bologna, Italy*

Abstract. Quality, architecture, and process are considered the keystones of software engineering. ISO defines them in three separate standards. However, their interaction has been scarcely studied, so far. The SQuAP model (Software Quality, Architecture, Process) describes twenty-eight main factors that impact on software quality in banking systems, and each factor is described as a relation among some characteristics from the three ISO standards. Hence, SQuAP makes such relations emerge rigorously, although informally. In this paper, we present SQaAP-Ont, an OWL ontology designed by following a well established methodology based on the re-use of Ontology Design Patterns (i.e. ODPs). SQaAP-Ont formalises the relations emerging from SQuAP in order to represent and reason via Linked Data about software engineering in a three-dimensional model consisting of quality, architecture, and process ISO characteristics.

Keywords: Ontologies, Ontology Design Patterns, Pattern-based Ontology Modelling, Software Engineering, Software Quality, Software Process, Software Architecture.

1. A three-dimensional view on software quality

Industrial standards are widely used in the software engineering practice: they are built on pre-existing literature and provide a common ground to scholars and practitioners to analyze, develop, and assess software systems. As far as software quality is concerned, the reference standard is the ISO/IEC 25010:2011 (ISO quality from now on), which defines the quality of software products and their usage (i.e., in-use quality). The ISO quality standard introduces eight *characteristics* that qualify a software product, and five characteristics that assess its quality in use. A characteristic is a parameter for measuring the quality of a software system-related aspect, e.g. reliability, usability, performance efficiency. The quantitative value associated with a characteristic is measured by means of metrics that are dependent on the context of a specific software project, and defined in established literature.

The ISO quality standard only focuses on the resulting software product without explicitly accounting

for the *process* that was followed or the implemented *architecture*. However, there is wide agreement [34] about the importance of the impact of three combined dimensions: software quality, software development process, and software architecture, on the successful management and evolution of information systems. In this respect, the industrial standard ISO/IEC 12207:2008 defines a structure for the software process life cycle, and outlines the tasks required for developing and maintaining software [39]. Regardless of the chosen methodology (i.e., Agile or Waterfall ones [34]), this standard identifies the relevant concepts of the life cycle and provides a useful tool for software developers to assess if they have undertaken all recommended actions or not. Each lifecycle concept can be evaluated according to its maturity level by means of established metrics, e.g. the Capability Maturity Model Integration (CMMI) [42]. As for the architectural dimension, the ISO/IEC 42010:2011 standard provides a glossary for the relevant objects of a software architecture. With regard to software architecture evaluation, intended as a way to achieve quality attributes (i.e., maintainability and reliability in a system), some approaches have emerged, the most promi-

* Corresponding author. E-mail: daniel.russo@unibo.it.

ment being ATAM, proposed by the Software Engineering Institute [4, 5, 12, 27]. Typical research in this domain is about how architectural patterns and guidelines impact software components and configurations [19]. A survey study [14] analyzes architectural patterns in order to identify potential risks, and to verify the quality requirements that have been addressed in the architectural design of a system.

The mutual relations among the three dimensions and their impact on the quality of software systems has been poorly addressed in literature, but a recent empirical study [37] in the domain of Software Banking Systems pointed out the importance of those relations. The study involved 13 top managers of the IT Banking sector in a first phase, and 124 additional domain experts in a second validation phase. The result is a model named SQuAP that describes these relations in terms of *quality factors*. According to [21] the information available to guide and support the management of software quality efforts is a critical success factor for domains such as IT. Considering the broad coverage of its empirical provenance, a formalisation of SQuAP may serve as a reference resource and practical tool for scholars and practitioners of software engineering, to assess the quality of a software system, to drive its development in order to meet a certain quality level, as well as to teach software engineering.

The SQuAP model builds on the concept of *quality factor*: a n -ary relation between software quality characteristics that cover the three dimensions of software product, process, and architecture, based on the three reference standards ISO/IEC 25010:2011, ISO/IEC 12207:2008, and ISO/IEC 42010:2011 respectively. A SQuAP quality factor can be described as a complex quality characteristic (or *parameter*) that provides a three-dimensional view for assessing software quality. The model identifies twenty-eight quality factors.

Our contribution consists in a resource named SQuAP-Ont, an ontology that formally represents the concept of quality factor by reusing existing ontology design patterns (e.g., Description and Situation [16, 35]), instantiates all factors identified so far, and axiomatises them in order to infer measurable factors based on the characteristics available at hand. In addition, the ontology has been annotated with OPLa¹ (Ontology Design Pattern representation language) to increase its reusability. SQuAP-Ont is publicly avail-

able online² with accompanying documentation that describes the factors, under a CC-BY-4.0 license.

In the rest of the paper, after discussing relevant related work (Section 2), we provide additional details about the SQuAP model by presenting two sample factors; we describe the SQuAP-Ont ontology: its main concepts and axioms, the adopted design methodology and the reused ontology design patterns (Section 4); we provide examples of how to use it in Section 5; and discuss the resource potential impact (Section 6) before concluding and identifying future developments, in Section 7.

2. Related work

The use of ontologies in the software engineering domain is very common [8, 25, 44]. The ISO standards referenced in Section 1 have been the subject of several ontological studies. For example, useful guidelines for their ontological representation are proposed by [20, 23].

An ontology-based approach to express software processes at the conceptual level was proposed in [30] and implemented in e.g. [40] for CMMI [11]. Software quality attributes have been modeled in [26], while an ontology for representing software evaluation is proposed in [10]. A formalisation of the ISO 42010, describing software architecture elements, is developed in [15] and in [28]. While [2] argues that different architecture domains can be integrated and analyzed through the use of ontologies.

Most [11, 15, 30, 40] of the aforementioned works focus on a strict representation of standards in terms of ontologies. Other scholars [10, 26] provide only preliminary ontological solutions for modelling quality characteristics or software evaluation and, to the best of our knowledge, they overlook the reuse of ontology design patterns. In contrast, our work focuses on the relation between the different ISO standards (system quality, software development process, and software architecture) for supporting the assessment of software system quality, with the added value of following a rigorous pattern-based ontology design approach.

Also at a higher level, an ontology to harmonize different hierarchical process levels through multiple models such as CMMI, ISO 90003, ITIL, SWEBOK, COBIT was presented in [33].

¹<http://ontologydesignpatterns.org/opla/>

²<https://w3id.org/squap/>

Ontologies referred to software quality focus primarily on quality attributes [26]. One quality evaluation, based on the ISO 25010 standard, is enhanced by taking into consideration several object-oriented metrics [32]. Similarly, [10] reuse current quality standards and models to present an ontology for representing software evaluations.

The ISO 42010 standard regarding software architecture already a formalization of architecture framework within the ontology of the standard [15]. An ontological representation of architectural elements has also been expanded by [28]. With particular reference to the architecture rationale, some visualization and comparison techniques with semantic web technologies have been proposed in literature [31]. Moreover, scholars showed that different architecture domains can be integrated and analyzed through the use of ontologies [2]

Finally, the Semantic Web community proposed also guidelines regarding the representation ISO standards of software engineering with ontologies [20, 23]. These two papers use a domain ontology, proposing the creation of a single underpinning abstract domain ontology, from existing ISO/IEC standards. According to the authors, an adoption of a single ontology will permit the re-engineering of existing International Standards as refinements from this domain ontology so that these variously focused standards may interoperate.

3. Relational quality factors: the SQuAP Model

The motivation for developing SQuAP is based on the understanding, in both software engineering and information systems communities, that assessing software quality for contemporary information systems requires to take into consideration the relations between different dimensional perspectives, namely: software quality, process and architecture [34]. Accordingly, we conducted an empirical study in the banking sector [37]: In a first phase, based on the Delphi method [13], we involved 13 top managers of this sector to express their greatest software quality concerns. The result was a set of distinct 28 quality factors emerging from the elicited concerns, after a consensus-based negotiation phase (part of the Delphi method). In a second phase, we involved 124 domain experts that validated the 28 factors with a high level of agreement. Each factor has been then linked to a number of characteristics or elements defined in the three different standards i.e., ISO

25010, ISO 42010, and ISO 12207, for software quality, architecture, and process respectively. We followed the theoretical coding approach [41] to map the factors to the ISO standards³.

The selection criteria and demographics of the experts involved in both phases, the inclusion and exclusion criteria, the agreement figures as well as the industry coverage are explained in [37]. In the same paper, we provide further details about the methodological approach and an exhaustive description of the 28 factors. A list of them is also published on the resource website⁴ along with a short textual description, and by tables depicting their mappings to ISO standards.

The 28 SQuAP factors have been rigorously although informally defined in our previous work [37]. These definitions are the main input for the development of SQuAP-Ont, hence it is relevant to report here at least one them. The definition of a factor consists of a set of quotes from the experts involved in the study followed by an analysis (based on theoretical coding) on what are the main characteristics and elements from the standards that emerged as components of the factor. We choose randomly one factor (26) to explain the underlying logic of the factor mapping.

Factor 26: Data analysis vs. Functional analysis. This factor explores whenever poor data analysis influences functional analysis and so, system integrity. *“The “functional centric” view is quite misleading, since it relegates the importance of data. Data give the “static view” of existing functionalities, which is very important for the functional analysis. One software product may have all possible functionalities required by the user but lacking of fundamental data its deployment and system integration becomes impossible”*, said one surveyed expert. Moreover, *“data analysis skills are generally lacking and poorly used in functional analysis”*, affirmed another one. Apparently, this issue is present market wide. *“In my opinion, in the market there is a lacking perception about the importance of data analysis as preliminary phase of functional analysis”*. However, other experts disagree. *“Saying that poor analysis are due to poor data understanding is a quite generic (it is obvious that data processing is the main IT goal) and old issue”*. Other issues are also relevant to understand the factor. *“Also knowing what different data means is impor-*

³Standards are *de facto* second-order theories, built on grounded pre-existing ones and shared among scholar’s and practitioner’s communities.

⁴<https://w3id.org/squap/documentation/factors.html>

tant”. And “it is not only an issue of poor technical skills”. Furthermore, “personally, I saw poorer knowledge of bank’s operation processes”. Apparently, there was a shift after 2010 which give interesting insights. “It is true for applications developed before 2010. Data governance is now more relevant and data analysis is performed before the functional one. So I see a clear discontinuity with the past”.

Theoretical coding analysis: experts stressed the importance of data and functional analysis, impacting on the dimensions of **Functional Correctness** (software quality), **Development** (software process), and **Architecture View** (software architecture). In fact, they refer to the functional suitability of applications through correctness. This impacts the development process, which is supported by such analysis. The architecture view addresses the concern of a suitable system held by the system’s stakeholders. Figure 1 shows a graphical representation of Factor 26.

4. SQuAP-Ont: an OWL formalisation of SQuAP

The SQuAP Ontology (SQuAP-Ont) is designed by reusing ontology design patterns (ODPs) [18] according to an extension of the eXtreme Design methodology [6, 36]. This extension mainly focuses on providing ontology engineers with clear strategies for ontology re-use. According to the guidelines provided by [36], we adopt the *indirect re-use*: ODPs are re-used as templates. At the same time, the ontology guarantees interoperability by keeping the appropriate alignments with the external ODPs, and provides extensions that satisfy more specific requirements. The ontology addresses a set of *competency questions* [22], listed in Table 1, identified by analysing the SQuAP model (cf. Section 3) and by discussing with domain experts.

Table 1

Competency questions used for modelling SQuAP-Ont.

ID	Competency question
CQ1	What are the quality characteristics of a software system at software, process, and architectural level?
CQ2	What are the factors, the assessment of which, is affected by a certain quality characteristic?
CQ3	What are the quality characteristics that affect the assessment of a certain factor?
CQ4	What is the unit of measure (i.e. metric) associated with a certain quality characteristic?
CQ5	What is the value computed for assessing a certain quality characteristic?

In addition, it has been noted that in order to assess a factor at least one of its affecting quality characteristics must have been measured.

4.1. Ontology description

Figure 2 shows a diagram of SQuAP-Ont. We use the namespace <https://w3id.org/squap/>. SQuAP-Ont re-uses as templates the following ontology design patterns [35]: Description and Situation (D&S)⁵ [17], and Parameter Region⁶.

The D&S pattern allows to represent the conceptualisation of a n -ary relation (i.e. description) and its occurrences (i.e. situations) in the same domain of discourse. For example, it is used for representing the description of a plan (D) and its actual executions (S), the model of a disease (D, e.g. its symptoms) and the actual occurrence of it in a patient (S), etc. SQuAP-Ont reuses this pattern for modeling quality factors with the class `:SoftwareQualityFactor`, a subclass of `:Description`. The actual occurrences of quality factors assessed in a specific software project are modelled with the class `:FactorOccurrence`, a subclass of `:Situation`. Both `:Description` and `:Situation` are core elements of the D&S pattern. According to the D&S pattern a `:Description` defines a set of `:Concepts`. In the context of SQuAP-Ont we say that a `:SoftwareQualityFactor` uses a set of `:SoftwareQualityCharacteristic`. This relation is modelled by the property `:usesQualityCharacteristic`. We model three types of `:SoftwareQualityCharacteristic`: `:SoftwareQuality`, the class `:ArchitecturalAlignment`, and the class `:ProcessMaturity`. They classify the characteristics associated with the three different ISO standards and their respective perspectives, i.e. software quality, architecture, and process. In a similar way, a set of entities are in the setting provided by a `:Situation`. In the context of SQuAP-Ont we say that a set of `:MeasurementResult` affects the assessment of a `:FactorOccurrence`. We model three types of `:MeasurementResult` with the classes `:SoftwareQualityMeasurementResult`, `:ArchitecturalAlignmentResult`, and `:ProcessMaturityResult` which are instantiated with result measurements computed for assessing the quality

⁵<http://ontologydesignpatterns.org/cp/owl/descriptionandsituation.owl>

⁶<http://ontologydesignpatterns.org/cp/owl/parameterregion.owl>

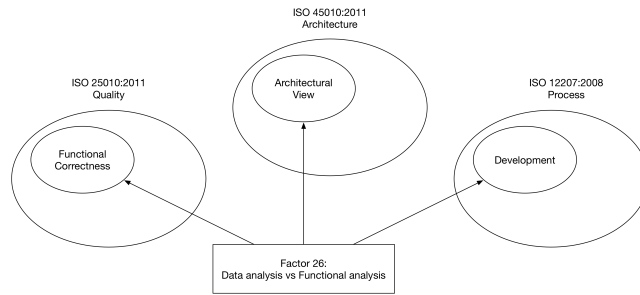


Fig. 1. Factor 26: Data analysis vs. Functional analysis. This factor is defined as a relation between three quality characteristics of a software project: Functional Correctness (ISO 25010), Architectural View (ISO 45010), and Development (ISO 12207).

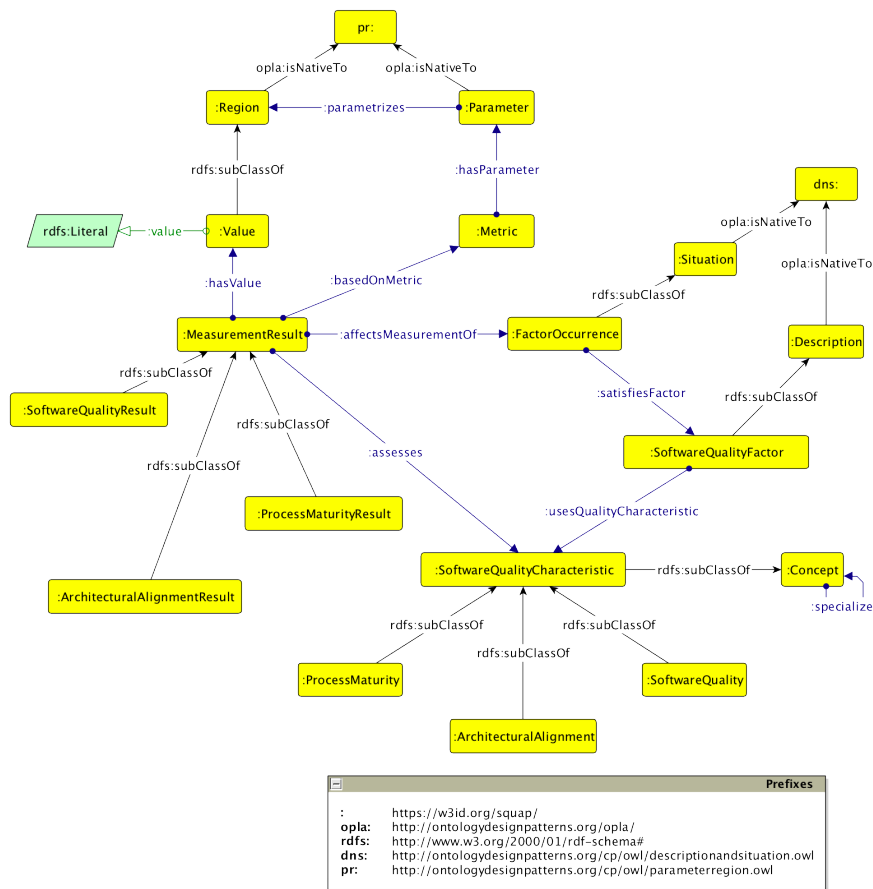


Fig. 2. Core classes of SQuAP-Ont.

characteristics of a specific software system. A :MeasurementResult has a :Value and a reference :Metric. For example, we may want to represent that the *Reliability* of a software system is associated with a specific degree value according to a certain metric. This part of the model reuses the Parameter Region ontology design pattern as template.

In D&S each entity that is in the setting of a :Situation is classified by a :Concept. In the context of SQuAP-Ont we specialised this relation by saying that a :MeasurementResult assesses a :SoftwareQualityCharacteristic. Based on the :MeasurementResults that compose a :FactorOccurrence it may satisfy one or more

:SoftwareQualityFactors (cf. modelled by the property :satisfiesFactor).

:SoftwareQualityFactors are represented in SQuAP both as individuals and classes, by exploiting OWL DL punning. In the first case, the factors are represented as instances of the class :SoftwareQualityFactor. All factors identified by the SQuAP model are instantiated in the ontology. In the second case, the factors are represented as subclasses of :SoftwareQualityFactor. The benefit from modeling factors with punning is the possibility to use both DL axioms or rules (e.g., SPARQL CONSTRUCT) to infer new knowledge. SQuAP-Ont models the three types of :SoftwareQualityCharacteristics in a similar way: a set of individuals extracted from the SQuAP model, according to the three reference ISO standards (cf. Section 3), are included in the ontology. They are also modelled as classes so as to make the ontology extensible with possible specific axioms). Furthermore, :SoftwareQualityCharacteristics are organised hierarchically by means of the object property :specializes.

SQuAP-Ont is annotated with the OPLa ontology [24] for explicitly indicating the reused patterns. We use the property `opla:reusesPatternAsTemplate` to link SQuAP-Ont to the two patterns we adopted as template i.e. D&S and Parameter Region. Similarly, we use the property `opla:isNativeTo` to indicate that certain classes and properties of SQuAP-Ont are core elements of specific ontology patterns. This annotations enable the automatic identification of the patterns reused by SQuAP-Ont, e.g. with SPARQL queries, hence facilitating the correct reuse of the ontology.

Finally, SQuAP is aligned, by means of an external file, to DOLCE+DnS UltraLight⁷. Tables 2 and 3 report the alignments axioms between the classes and the properties of the two ontologies, respectively.

Table 2

Alignments between the classes of SQuAP-Ont and DOLCE UltraLight.

SQuAP class	Align. axiom	DOLCE class
:Region	owl:equivalentClass	dul:Region
:Value	owl:subClassOf	dul:Amount
:Parameter	owl:equivalentClass	dul:Parameter
:Concept	owl:equivalentClass	dul:Concept
:Situation	owl:equivalentClass	dul:Situation

Table 3

Alignments between the properties of SQuAP-Ont and DOLCE UltraLight.

SQuAP prop.	Align. axiom	DOLCE prop.
:classifies	owl:equivalentProperty	dul:classifies
:isClassifiedBy	owl:equivalentProperty	dul:isClassifiedBy
:usesConcept	owl:equivalentProperty	dul:usesConcept
:isConceptUsedIn	owl:equivalentProperty	dul:isConceptUsedIn
:satisfies	owl:equivalentProperty	dul:satisfies
:isSatisfied	owl:equivalentProperty	dul:isSatisfied
:specializes	owl:equivalentProperty	dul:specializes
:isSpecializedBy	owl:equivalentProperty	dul:isSpecializedBy
:isSettingFor	owl:equivalentProperty	dul:isSettingFor
:value	owl:subPropertyOf	dul:hasRegionDataValue

4.2. Formalisation

The following is the formalisation of SQuAP-Ont described in Section 4.2. The formalisation is expressed in Description Logics. For brevity, we use the terms `SwQualityChar` for `SoftwareQualityCharacteristic`, `ArchAlign` for `ArchitecturalAlignment`, `ProcMat` for `ProcessMaturity`, `SwQuality` for `SoftwareQuality`, `SwQualityFactor` for `SoftwareQualityFactor`, `MeasureRes` for `MeasurementResult`, `ProcMatRes` for `ProcessMaturityResult`, and `MeasureQualityRes` for `MeasurementQualityResult`.

$$\text{Value} \sqsubseteq \text{Region} \sqcap = \text{1value.Literal}$$

$$\text{Concept} \not\sqsubseteq \text{Description} \sqcup \text{Situation}$$

$$\text{SwQualityChar} \sqsubseteq \text{Concept}$$

$$\text{SwQualityChar} \equiv \text{ArchAlign}$$

$$\sqcup \text{ProcMat}$$

$$\sqcup \text{SwQuality}$$

$$\text{ArchAlign} \sqsubseteq \text{SwQualityChar}$$

$$\text{ArchAlign} \not\sqsubseteq \text{ProcMat} \sqcup \text{SwQuality}$$

$$\text{ProcMat} \sqsubseteq \text{SwQualityChar}$$

$$\text{ProcMat} \not\sqsubseteq \text{ArchAlign} \sqcup \text{SwQuality}$$

$$\text{SwQuality} \sqsubseteq \text{SwQualityChar}$$

$$\text{SwQuality} \not\sqsubseteq \text{ArchAlign} \sqcup \text{ProcMat}$$

$$\text{Description} \not\sqsubseteq \text{Concept} \sqcup \text{Situation}$$

$$\text{SwQualityFactor} \sqsubseteq \text{Description}$$

$$\sqcap \forall \text{uses.SwQualityChar}$$

$$\sqcap \exists \text{uses.SwQualityChar}$$

$$\text{MeasureRes} \sqsubseteq \forall \text{assess.SwQualityChar}$$

$$\sqcap = \text{1hasValue.Value}$$

⁷<http://www.ontologydesignpatterns.org/ont/dul/DUL.owl>

```

    □ =hasMetric.Metric
ArcAlignmentRes ⊆ MeasureRes
    ProcMatRes ⊆ MeasureRes
MeasureQualityRes ⊆ MeasureRes
    FactorOccurrence ⊆ Situation
    □ ∃isAffectedBy.MeasureRes
    □ ∃satisfies.SwQualityFactor
uses ◦ specializes ⊆ usesConcept

```

4.3. Implementation details

The namespace <https://w3id.org/squap/> identifies the ontology and enables permanent identifiers to be used for referring to concepts and properties of the ontology. Additionally, we setup a content negotiation mechanism that allows a client to request the ontology either (i) as HTML (e.g. when accessing the ontology via a browser) or (ii) as one of the possible serialisations allowed (i.e. RDF/XML, Turtle, N-triples). The alignments with DOLCE+DnS UltraLight (DUL) are published in a separate OWL file⁸, which imports both SQuAP-Ont and DUL. This allows one to use either SQuAP-Ont alone or its version aligned with and dependent on DUL.

The resource, including the core ontology, the alignments, and the usage examples, is under version control on a GitHub repository⁹.

SQuAP-Ont is published according to the Creative Commons Attribution 4.0 International (CC-BY-4.0) license¹⁰. The license information is included in the ontology by using the VOID vocabulary¹¹.

5. How to use SQuAP-Ont

Flexibility is among the most relevant characteristic of this ontology. Although the higher levels of this ontology, regarding the standard and the factors mapping are fixed, its measurement model can be adapted to the most suited scenario. In particular, the proposed way to evaluate information systems characteristics is just an explanatory example, which can be adapted to for any kind of assessment purposes.

As a usage example of the SQuAP ontology, we show a real world example consisting in the evaluation of a banking application by means of the Goal-Question-Metric (GQM) approach [3]. GQM defines a measurement model on three levels i.e. Conceptual level (Goal), Operational level (Question), Quantitative level (Metric). This method offers a hierarchical assessment framework, where goals are typically defined and stable in time, and metrics may be adapted according to new measurement advances. So, we stress the fact that this paper does not focus on the measurement model, rather on the knowledge representation of SQuAP for assessment and benchmarking purposes. So, we provide the following synthetic RDF data about the assessment. The data are expressed as RDF serialised in Turtle¹².

```

@prefix : <https://w3id.org/squap/examples/gqm/> .
@prefix arc:
  <https://w3id.org/squap/ArchitecturalAlignment/> .
@prefix sw:
  <https://w3id.org/squap/SoftwareQuality/> .
@prefix prc:
  <https://w3id.org/squap/ProcessMaturity/> .
@prefix squap: <https://w3id.org/squap/> .

:compatibility-result a
  squap:SoftwareQualityMeasurementResult ;
  squap:assesses sw:Compatibility ;
  squap:basedOnMetric :sonarqube-sw-quality ;
  squap:hasValue :sonarqube-value-b .

:correspondenceresult
  a squap:ArchitecturalAlignmentMeasurementResult ;
  squap:assesses arc:Correspondence ;
  squap:basedOnMetric :likert-scale-1-7 ;
  squap:hasValue :likert-value-7 .

:documentation-result
  a squap:ProcessMaturityMeasurementResult ;
  squap:assesses prc:Documentation ;
  squap:basedOnMetric :likert-based-prc-maturity ;
  squap:hasValue :likert-value-6 .

:sonarqube-sw-quality a squap:Metric ;
  squap:hasParameter :sonarqube-params .

:sonarqube-params a squap:Parameter ;
  parametrizes :sonarqube-value-a ,
    :sonarqube-value-b ,
    :sonarqube-value-c .

likert-based-prc-maturity a squap:Metric ;
  squap:hasParameter :likert-scale-1-7 .

:likert-scale-1-7 a squap:Parameter ;
  parametrizes
    :likert-value-1 , :likert-value-2 ,
    :likert-value-3 , :likert-value-4 ,
    :likert-value-5 , :likert-value-6 ,
    :likert-value-7 .

:sonarqube-value-b a squap:Value ;
  squap:grade "B" .

```

⁸<https://w3id.org/squap/squap-dul.owl>

⁹<https://github.com/anuzzolese/squap>

¹⁰<https://creativecommons.org/licenses/by/4.0/>

¹¹<http://vocab.deri.ie/void>

¹²The RDF is available at <https://w3id.org/squap/examples/gqm>

```
:likert-value-7 a squap:Value ;
  squap:value 7 .

:likert-value-6 a squap:Value ;
  squap:value 6 .
```

The example describes a banking system associated with three assessments about the dimensions of software quality, architectural alignment, and process maturity. The specific measurement results are: `:compatibility-result`, which assesses the characteristic `sw-quality:Compatibility` (software quality), `:correspondenceresult`, which assesses the characteristic `arc-alignment:Correspondence` (architectural alignment), and `:documentation-result`, which assesses the characteristic `prc-maturity:Documentation` (process maturity). Those measurement results are associated with a value (e.g. `:likert-value-7`, which identifies the value 7 of a Likert scale) and a metric (e.g. `:likert-scale-1-7`, which identifies a Likert scale ranging from 1 to 7). Each value is reported with a literal representation and its associated with a metric. It is possible to use the axioms defined in SQuAP-Ont in order to gather all the factors that can be enabled by the available measured quality characteristics (e.g. `sw-quality:Compatibility`). This can be done, for example, by executing a Protégé DL query, the result of which is shown in Figure 3.

In this example, different standards' items represent the Goals, which are measured with one or several (also concurrent) software quality metrics. In order to do so, we followed literature recommendations [9, 43]. The result is the sum of different evaluators, which represent a measurement of the three standards.

Alternatively, it is possible to define productive rules in order to materialise the factors that are enabled by the available measured quality characteristics. The following SPARQL CONSTRUCT is a possible productive rule for our example.

```
PREFIX squap: <https://w3id.org/squap/>
PREFIX rdfs: <http://www.w3.org/2000/01/rdf-schema#>
CONSTRUCT {
  ?measurementResult
    :affectsMeasurementOf ?factorOccurrence .
  ?factorOccurrence
    a squap:FactorOccurrence;
    squap:satisfiesFactor ?factor
}
WHERE{
  ?factor
    squap::usesQualityCharacteristic ?char;
    rdfs:label ?factorLabel .
  ?measurementResult
    squap:assesses ?char
```

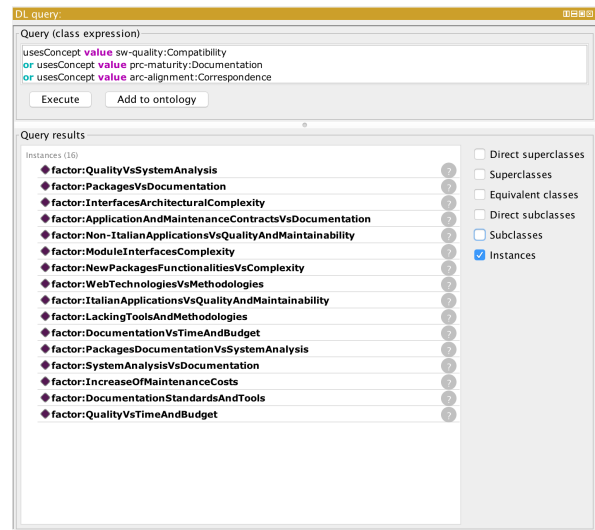


Fig. 3. Execution of a DL query on the RDF sample.

```

BIND (IRI (
  CONCAT ("https://w3id.org/squap/example/gqm/",
    ?factorLabel))
  AS ?factorOccurrence)
}

```

We remark that factors and quality characteristics are defined in SQuAP-Ont both as classes and individuals by means of OWL punning. Hence, one can decide to use DL reasoning or rules defined in any other formalism depending by the specific case, e.g. SPARQL CONSTRUCT.

6. Potential impact

In the last decade there has been a considerable effort, especially by the Management Information Systems research community, to study the phenomenon of the alignment of business and information systems [1]. What emerged is the importance of such alignment for both business' competitiveness and technical efficiency. In fact, when it comes to integrate new solutions, modules, or interfaces, such alignment is of key importance. Several other scholars found similar results, suggesting the importance of standard governance defining key architecture roles, involving key stakeholders through liaison roles and direct communication, institutionalizing monitoring processes and centralizing IT key decisions [7]. Especially in the financial sector, architectural governance is a key issue for IT efficiency and flexibility [38]. Generally speaking, this finding is also largely shared beyond the fi-

nancial sector [29]. The need for people from different backgrounds (mainly business and technical ones) to align the organization is the greatest insight of this research stream.

To tackle the issue of information systems quality from an empirical perspective we started in 2014 to survey banking application maintenance group experts, Chief Executive Officers, Chief Information Officers, IT architects, technical sales accounts, Chief Data Officers, and maintenance managers [37]. This ongoing project is pursued with a leading consultancy firm, according to which we were able to cover with our representative sample the IT banking sector. Consequently, the need for a knowledge representation of different measurement models is perceived as contingent, and requested by the IT banking community in this broad project on information systems' quality. One crucial insight that emerged from the factors is the difficulty to assess their applications, also due to the diversity and complexity of measurement models. Indeed, the three standards measure three different dimensions. Quality measures the software as a product; Process as a process; and Architecture the alignment to a taxonomy. Accordingly, metrics and predictors reflect these differences. Therefore, the development of this ontology is a direct request from practitioners.

Since this research journey started from an industry's need, an ontology, intended as the knowledge representation of different measurement models is of pivotal importance, and a first tool to systematize the assessment of banking information systems' quality. Thus, this ontology will be used for consultancy purposes, to implement the SQuAP quality model. Moreover, it is also useful to trace changes of quality in time, and suggest specific improvements. So, this ontology is the knowledge layer over which this quality model is built. Consultancy firms (like that ones we are working with) expressed their interest in a knowledge representation tool which can be displayed to customers in the assessment phase, to tailor their consultancy efforts. However, also bank's IT departments will use it for similar purposes. They can also tailor made and modify this ontology and the underlying metrics suggested by the literature, according to their specific needs.

For this reason we used a CC-BY-4.0 license, open to commercial use. Our industrial partners consider the use and reuse of this ontology as a great value for the practitioners' community.

7. Conclusion and future development

In this paper we have described SQuAP-Ont, an ontology to assess information systems of the banking sector. SQuAP-Ont a) guides its users through the (ongoing) assessment phases suggested by software engineering literature; b) helps identifying critical quality flaws within applications; and c) extends and integrates existing work on software ISO ontology terms, diagram visualizations and ontology revisions. SQuAP-Ont has been developed for commercial use, within an industrial project on quality of banking information systems. Nevertheless, like all ontologies it is an evolving effort, and we are open to suggestions proposed by the broad researchers and practitioners community. In fact, we have already addressed several issues raised in previous studies, and according to industry's expectations.

Our future work aims to facilitate enrichment and refine the ontology continuously along with standards and literature recommendation changes. Another important aspect is to validate and monitor the application of SQuAP in domains and software projects different from the Banking System context. This may lead to the identification of additional factors as well as to the enrichment and refinement of the ones already identified.

References

- [1] Aerts, A.T.M., Goossenaerts, J.B.M., Hammer, D.K., Wortmann, J.C.: Architectures in context: on the evolution of business, application software, and ict platform architectures. *Information & Management* 41(6), 781–794 (2004)
- [2] Antunes, G., Caetano, A., Bakhshandeh, M., Mayer, R., Borbinha, J.: Using ontologies to integrate multiple enterprise architecture domains. In: *International Conference on Business Information Systems*. pp. 61–72. Springer (2013)
- [3] Basili, V.R.: Software modeling and measurement: the goal/question/metric paradigm. Tech. rep. (1992)
- [4] Bellomo, S., Gorton, I., Kazman, R.: Toward agile architecture: Insights from 15 years of ATAM data. *IEEE Software* 32(5), 38–45 (2015)
- [5] Bengtsson, P., Lassing, N., Bosch, J., van Vliet, H.: Architecture-level modifiability analysis (alma). *Journal of Systems and Software* 69(1), 129–147 (2004)
- [6] Blomqvist, E., Presutti, V., Daga, E., Gangemi, A.: Experimenting with eXtreme Design. pp. 120–134. Springer (2010)
- [7] Boh, W., Yellin, D.: Using enterprise architecture standards in managing information technology. *Journal of Management Information Systems* 23(3), 163–207 (2006)
- [8] Calero, C., Ruiz, F., Piattini, M.: *Ontologies for software engineering and software technology*. Springer (2006)

- [9] Campbell, G., Papapetrou, P.: *SonarQube in action*. Manning Publications Co. (2013)
- [10] Castro, R., Gutiérrez, M., Kerrigan, M., Grimm, S.: An ontology model to support the automated evaluation of software. In: *International Conference on Software Engineering and Knowledge Engineering*. Knowledge Systems Institute Graduate School (2010)
- [11] Chrissis, M.B., Konrad, M., Shrum, S.: *CMMI guidelines for process integration and product improvement*. Addison-Wesley Longman Publishing Co., Inc. (2003)
- [12] Clements, P., Kazman, R., Klein, M.: *Evaluating Software Architectures* (2002)
- [13] Dalkey, N.C., Brown, B.B., Cochran, S.: *The Delphi method: An experimental study of group opinion*, vol. 3. Rand Corporation Santa Monica, CA (1969)
- [14] Dobrica, L., Niemela, E.: A survey on software architecture analysis methods. *IEEE Transactions on Software Engineering* 28(7), 638–653 (2002)
- [15] Emery, D., Hilliard, R.: Every architecture description needs a framework: Expressing architecture frameworks using iso/iec 42010. In: *Conference on Software Architecture*. pp. 31–40. IEEE (2009)
- [16] Gangemi, A.: Norms and plans as unification criteria for social collectives. *Autonomous Agents and Multi-Agent Systems* 17(1), 70–112 (2008), <https://doi.org/10.1007/s10458-008-9038-9>
- [17] Gangemi, A., Mika, P.: Understanding the semantic web through descriptions and situations. In: *OTM Confederated International Conferences "On the Move to Meaningful Internet Systems"*. pp. 689–706. Springer (2003)
- [18] Gangemi, A., Presutti, V.: *Ontology Design Patterns*. pp. 221–243. Springer (2009)
- [19] Garlan, D., Perry, D.E.: Introduction to the special issue on software architecture. *IEEE Transaction on Software Engineering* 21(4), 269–274 (1995)
- [20] Gonzalez-Perez, C., Henderson-Sellers, B., McBride, T., Low, G.C., Larrucea, X.: An Ontology for ISO software engineering standards: 2) Proof of concept and application. *Computer Standards & Interfaces* 48, 112–123 (2016)
- [21] Gorla, N., Somers, T., Wong, B.: Organizational impact of system quality, information quality, and service quality. *The Journal of Strategic Information Systems* 19(3), 207–228 (2010)
- [22] Grüniger, M., Fox, M.S.: The role of competency questions in enterprise engineering. In: *Benchmarking—Theory and practice*, pp. 22–31. Springer (1995)
- [23] Henderson-Sellers, B., Gonzalez-Perez, C., McBride, T., Low, G.: An ontology for iso software engineering standards. *Computer Standards & Interfaces* 36(3), 563–576 (2014)
- [24] Hitzler, P., Gangemi, A., Janowicz, K., Krisnadhi, A.A., Presutti, V.: Towards a simple but useful ontology design pattern representation language. In: *Proc. of the WOP2017*. CEUR-ws (2017)
- [25] Kabaale, E., Wen, L., Wang, Z., Rout, T.: An axiom based metamodel for software process formalisation: An ontology approach. In: *International Conference on Software Process Improvement and Capability Determination*. pp. 226–240. Springer (2017)
- [26] Kayed, A., Hirzalla, N., Samhan, A.A., Alfayoumi, M.: Towards an ontology for software product quality attributes. In: *International Conference on Internet and Web Applications and Services*. pp. 200–204. IEEE (2009)
- [27] Kazman, R., Bass, L., Abowd, G., Webb, M.: Saam: A method for analyzing the properties of software architectures. In: *International Conference on Software Engineering*. pp. 81–90. ACM/IEEE (1994)
- [28] Kumar, K., Prabhakar, T.: Pattern-oriented knowledge model for architecture design. In: *Conference on Pattern Languages of Programs*. p. 23. ACM (2010)
- [29] Lange, M., Mendling, J., Recker, J.: An empirical analysis of the factors and measures of enterprise architecture management success. *European Journal of Information Systems* 25(5), 411–431 (2016)
- [30] Liao, L., Qu, Y., Leung, H.: A software process ontology and its application. In: *Workshop on Semantic Web Enabled Software Engineering*. pp. 6–10 (2005)
- [31] López, C., Inostroza, P., Cysneiros, L., Astudillo, H.: Visualization and comparison of architecture rationale with semantic web technologies. *Journal of Systems and Software* 82(8), 1198–1210 (2009)
- [32] Motogna, S., Ciuciu, I., Serban, C., Vescan, A.: Improving software quality using an ontology-based approach. In: *OTM Confederated International Conferences*. pp. 456–465. Springer (2015)
- [33] Pardo, C., Pino, F.J., García, F., Piattini, M., Baldassarre, M.: An ontology for the harmonization of multiple standards and models. *Computer Standards & Interfaces* 34(1), 48–59 (2012)
- [34] Pressman, R.: *Software Engineering: a Practitioner's Approach*. McGrawHill (2014)
- [35] Presutti, V., Gangemi, A.: Dolce+d&s ultralite and its main ontology design patterns. In: Hitzler, P., Gangemi, A., Janowicz, K., Krisnadhi, A., Presutti, V. (eds.) *Ontology Engineering with Ontology Design Patterns - Foundations and Applications, Studies on the Semantic Web*, vol. 25, pp. 81–103. IOS Press (2016)
- [36] Presutti, V., Lodi, G., Nuzzolese, A.G., Gangemi, A., Peroni, S., Asprino, L.: The role of ontology design patterns in linked data projects. pp. 113–121. Springer (2016)
- [37] Russo, D., Ciancarini, P., Falasconi, T., Tomasi, M.: Software quality concerns in the italian bank sector: The emergence of a meta-quality dimension. In: *International Conference on Software Engineering*. pp. 63–72. ACM/IEEE (2017)
- [38] Schmidt, C., Buxmann, P.: Outcomes and success factors of enterprise it architecture management: empirical insight from the international financial services industry. *European Journal of Information Systems* 20(2), 168–185 (2011)
- [39] Singh, R.: International Standard ISO/IEC 12207 software life cycle processes. *Software Process Improvement and Practice* 2(1), 35–50 (1996)
- [40] Soydan, G., Kokar, M.: An owl ontology for representing the cmmi-sw model. In: *Workshop on Semantic Web Enabled Software Engineering* (2006)
- [41] Strauss, A., Corbin, J.M.: *Grounded theory in practice*. Sage (1997)
- [42] Team, C.P.: *Capability Maturity Model® Integration (CMMI), Version 1.1—Continuous Representation* (2002)
- [43] Wagner, S., et al.: The Quamoco product quality modelling and assessment approach. In: *International Conference on Software Engineering*. pp. 1133–1142 (2012)
- [44] Zhao, Y., Dong, J., Peng, T.: Ontology classification for semantic-web-based software engineering. *IEEE Transactions on Services Computing* 2(4), 303–317 (2009)